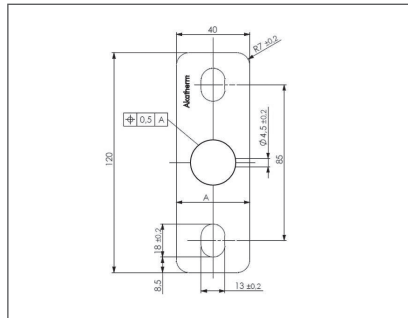


Mounting plate for guide bracket

Code 709478 / 709480



Mounting plate with slotted holes
Galvanised (electrolytic)
No CE marking applies to fixing materials*

R	Code	L1 (mm)	L2 (mm)	L3 (mm)	L4 (mm)	S (mm)	C (mm)	Weight (kg)	Nut Connection	FA** (N)
1/2"	709478	120	40	85	19	4	13	0,228	Full weld	20000
1"	709480	120	40	85	25	4	13	0,250	Full weld	20000

* Fixing systems for plastic pipe system are not covered by harmonised European Standards

** Maximum vertical load on weld

Packaging: 1 piece
Discount group: AD

Date: 11.2021